

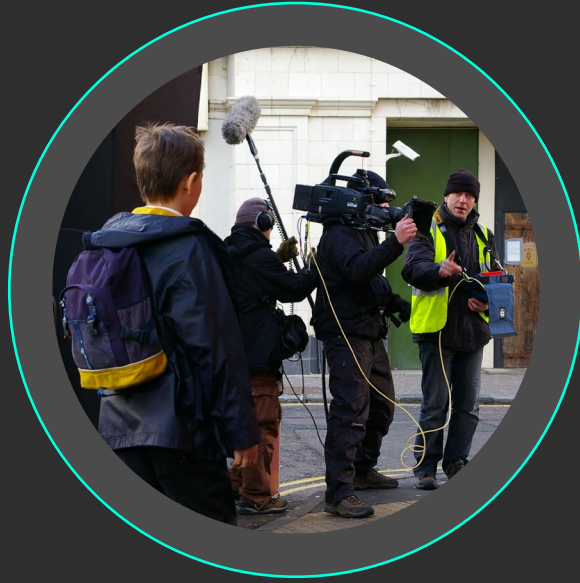
# ANDREA MCSWAN

Creative Director | Art Director | PhD





Creative Director



Production Designer

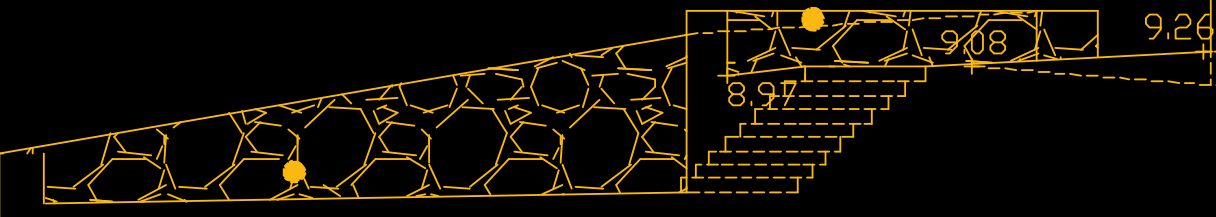
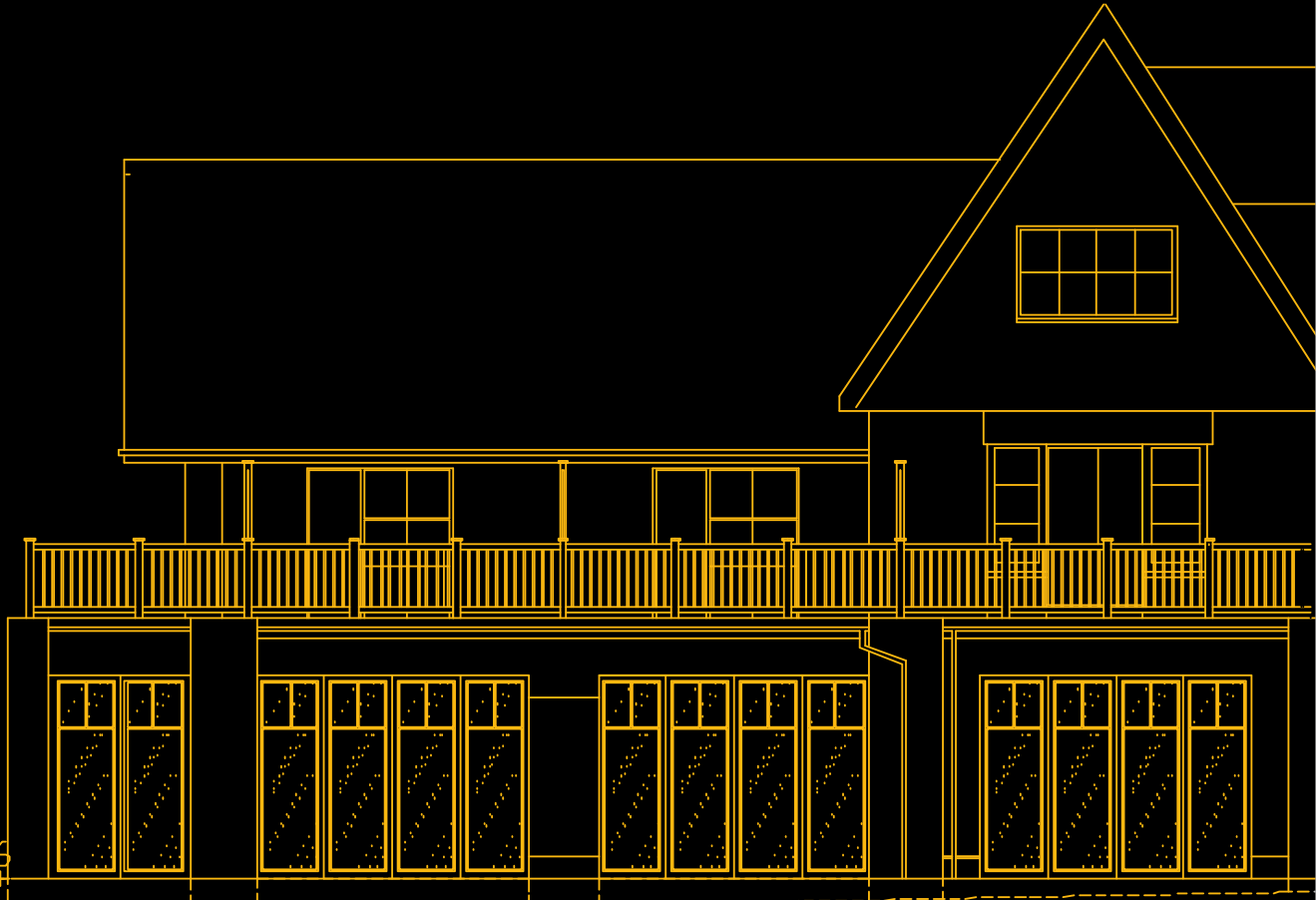


Art Dept



concept art









# about

Classically trained, I graduated in 1990 from *Wimbledon School of Art* with a BA in Theatre Design, winning a BAFTA scholarship to study film set design at the *National Film & Television School*. I began in the art departments for the feature film '*Judge Dredd*' designed by Nigel Phelps, and in TV on '*Pie in the Sky 3*' and an '*Independent Man*' with Production Designer, Tom Brown.

As a multi-faceted creative director and art director I have worked number of live-action and 3D animated projects. Whilst raising my family I worked as a freelance designer on productions for BBC Bristol and Screen South and designed architectural interiors for luxury hospitality portfolios; including HandPicked Hotels, Alexander House, House, Wagamama, ZeroDegrees Micro-Breweries and multi-million pound health spas for Utopia Leisure.

I live in Dundee with my husband, Hamish, and have kept pace with the technological advances in post-production, gaining a Master of Science in Animation & VFX and a PhD in Animation & Virtual Reality.

# values

I bring a multi-faceted and highly creative skill set to the table and these are the core values and principles that you can expect from me...



Dependable



Efficient



Communicative



Trustworthy



Reliable



Production	Company   Crew	Credit
<b>OUTLANDER</b> Season 7 - 2022	LBP Outlander 6 & 7 Ltd Prod Des: Mike Gunn	<b>Concept Artist</b>
<b>MORE THAN MEETS THE EYE</b> VR Animation 2022	DJCAD Dundee University    PhD Film: Exploring animation and virtual reality to represent the perceptual-experiences of artists with sight-loss	<b>Creative Director   PhD Researcher   Production Designer   Animator</b>
<b>THAW</b> Live action   3D Animation 2017	DJCAD Dundee University	<b>Creative Director   Production Designer   VFX   Animation</b>
<b>TOY SCANDAL</b> 3D Animation 2015	DJCAD Dundee University	<b>Creative Director   Production Designer Animation</b>
<b>ODD SHOE</b> Live action film 2009	Screen South. Dir: Paul Cotter	<b>Production Designer</b>
<b>PIE IN THE SKY 3</b> TV Series Ep. 1- 6 1996	Witzend Productions. Dirs: Martin Hutchings, Keith Boak, David Innes Edwards, Danny Hiller, Bill Pryde Prod Des: Tom Brown	<b>Set and location Assistant Art Director</b>
<b>AN INDEPENDENT MAN</b> TV Series 1996	Witzend Productions. Dirs: Lawrence Gordon Clark, Don Leaver, John Reardon Prod Des: Tom Brown	<b>Art Department Assistant</b>
<b>JUDGE DREDD</b> Feature Film 1994	Cinergi Pictures Entertainment Dir: Danny Cannon Prod Des: Nigel Phelps	<b>Art Department Assistant</b>
<b>STATE OF THE ARK</b> Drama Documentary 1993	BBC Bristol Prod: Kate Broome	<b>Production Designer</b>
<b>SHAMAN</b> Film 1993	NFTS Dir: Sean Geoghegan	<b>Production Designer</b>
<b>THIS BOY'S STORY</b> Film 1991	NFTS Dir: John Roberts	<b>Art Department Assistant</b>



Project	Company	Role
<b>ZERODEGREES</b> Micro-Brewery	Forthglen Investments	<b>Head Designer</b> <b>Specifier</b>
<b>PHYLLIS COURT</b> Orangery	Phyllis Court Club Private Members Club	<b>Head Designer</b> <b>Project Management</b> <b>Specifier. CAD</b>
<b>ALEXANDER HOUSE</b> Luxury multi-million pound New-build spa	Utopia Leisure	<b>Head Designer</b> <b>CAD</b>
<b>WAGAMAMA BRIGHTON</b> Global brand noodle bar	Wagamama	<b>Interior Designer</b> <b>Detailer. CAD</b>
<b>BRANDSHATCH PLACE</b> Country House Hotel & Spa	HandPicked Hotels	<b>Head Designer</b> <b>Project Management</b> <b>Specifier. CAD</b>
<b>NUTFIELD PRIORY</b> <b>BRASSERIE</b> AA Silver Star Hotel	HandPicked Hotels	<b>Head Designer</b> <b>Project Management</b> <b>Specifier. CAD</b>
<b>THE GEORGE</b> Coaching Inn & Guest Suites	The George	<b>Head Designer</b> <b>Project Management</b> <b>Specifier. CAD</b>
<b>ZEROBAR</b> Cocktail Bar	Forthglen Investments	<b>Head Designer</b> <b>Project Management</b> <b>Specifier. CAD</b>
<b>LEE BAY HOTEL</b> Hotel	WAW Leisure	<b>Head Designer</b> <b>Project Management</b> <b>Specifier. CAD</b>
<b>EASTWELL PAVILLION</b> Spa	Eastwell Manor	<b>Head Designer</b> <b>Project Management</b> <b>Specifier. CAD</b>
<b>STEVENAGE HOTEL</b> Restaurant & Bar	Thistle Hotels	<b>Head Designer</b> <b>Project Management</b> <b>Specifier. CAD</b>



# qualifications



**B A (Hons) Theatre Design**  
Wimbledon School of Art  
1987 - 1990



**BAFTA Scholarship Production Design**  
National Film & Television School  
1990 - 1993



**MSc Animation & VFX**  
DJCAD University of Dundee  
2015-2017



**PhD Animation & VR**  
DJCAD University of Dundee  
2018 - 2022



# let's connect



[andreamcswan@gmail.com](mailto:andreamcswan@gmail.com)



[@andreamcswan](https://www.instagram.com/andreamcswan)



+44 7824 704700



[www.andreamcswan.com](http://www.andreamcswan.com)